

Courses on offer

A- Levels

Art & Design (Cannock Chase Sixth Form)

New 2015 Specification

Minimum grade B in GCSE Art preferred

Biology (Cardinal Griffin Catholic College Sixth Form)

New 2015 Specification

Minimum grade B in Biology or B in Double Award Science

Business Studies (Cannock Chase Sixth Form)

New 2015 Specification

Minimum grade B in GCSE English & Mathematics preferred

Chemistry (Cardinal Griffin Catholic College Sixth Form)

New 2015 Specification

Minimum grade B in Chemistry or B in Double Award Science, plus Grade B in Maths preferred.

Drama (Cardinal Griffin Catholic College Sixth Form)

New 2016 Specification

Minimum grade C in GCSE Drama

DT - Product Design (Cardinal Griffin Catholic College Sixth Form)

New 2016 Specification

Minimum grade C in GCSE Design Technology

Economics (Cardinal Griffin Catholic College Sixth Form)

New 2015 Specification

Minimum grade C in English & Grade B Mathematics preferred

English Literature (Cardinal Griffin Catholic College Sixth Form)

New 2015 Specification

Minimum grade B in GCSE English Literature and English Language



Further Maths (Cannock Chase Sixth Form)

Change specification 2017

Minimum Grade A in GCSE Maths (you must also study Maths at A level)

Geography (Cardinal Griffin Catholic College Sixth Form)

New 2016 Specification

Minimum grade B in GCSE Geography

History (Cardinal Griffin Catholic College Sixth Form)

New 2015 Specification

Minimum grade B in GCSE History

ICT (Cardinal Griffin Catholic College Sixth Form)

Change specification 2017

Minimum grade C in GCSE English, Maths & ICT

Law (Cardinal Griffin Catholic College Sixth Form)

Change Specification 2017

Minimum grade C in English

Mathematics (Cardinal Griffin Catholic College Sixth Form)

Change specification 2017

Minimum grade B in Maths, A preferred

Media Studies (Cardinal Griffin Catholic College Sixth Form)

Change specification 2017

Minimum grade C in English

Modern Foreign Languages - French (Cardinal Griffin Catholic College Sixth Form)

New 2016 Specification

Minimum grade B in GCSE French preferred

Music (Cardinal Griffin Catholic College Sixth Form)

New 2016 Specification

Minimum grade B in GCSE Music



PE (Cardinal Griffin Catholic College Sixth Form)

New 2016 Specification

Minimum grade B in GCSE PE or GCSE Science with good practical sporting skills.

Philosophy & Ethics (Cardinal Griffin Catholic College Sixth Form)

New 2016 Specification

Minimum grade B in GCSE RE preferred or minimum English Grade C.

Physics (Cardinal Griffin Catholic College Sixth Form)

New 2015 Specification

Minimum grade B in Physics or B in Double Award Science. Plus Grade B GCSE in Maths preferred.

Psychology (Cannock Chase Sixth Form)

New 2015 Specification

Minimum grade C in GCSE English and Maths and B in Science preferred.

Sociology (Cardinal Griffin Catholic College Sixth Form)

New 2015 Specification

Minimum grade C in English

BTEC Courses (Level 3)**Applied Science** (Cannock Chase Sixth Form)

2014 Specification

Minimum grade C in GCSE Science or BTEC Applied Science (L2) at Distinction

Business Studies (Cannock Chase Sixth Form)

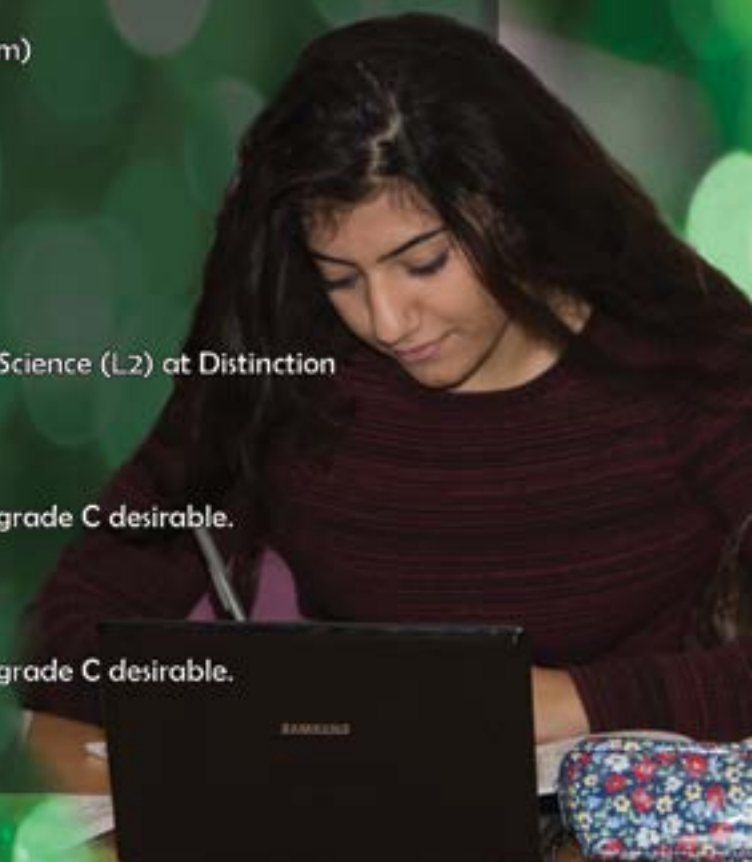
2014 Specification

Basic entry requirements (5 GCSE's A*-C). English at grade C desirable.

Child Development (Cannock Chase Sixth Form)

2014 Specification

Basic entry requirements (5 GCSE's A*-C). English at grade C desirable.



Drama (Cannock Chase Sixth Form)

2014 Specification

Basic entry requirements (5 GCSE's A*-C). Grade B in Drama preferred, or practical audition if not studied at GCSE

Health & Social Care (Single & Double)

(Cardinal Griffin Catholic College / Cannock Chase Sixth Form)

Same as 2014

Basic entry requirements (5 GCSE's A*-C). English at grade C desirable.

Music (Cannock Chase Sixth Form)

2014 Specification

Minimum grade C in GCSE Music preferred. Must be able to perform and have obtained a nationally recognised music qualification.

Sport (Cannock Chase Sixth Form)

2014 Specification

Minimum grade C in GCSE PE or BTEC Level 2 sport at Distinction or Grade C in GCSE Science with good practical sporting skills.

Horse Management (Equine Studies) (Cannock Chase Sixth Form)

2014 Specification

Minimum grade C in GCSE Science or PE.

PLEASE NOTE THAT ALL COURSES WILL ONLY RUN SUBJECT TO STAFFING AND SUFFICIENT NUMBERS WHICH MAY MEAN THAT SOME COURSES DO NOT RUN.

